

# **Scenario files**

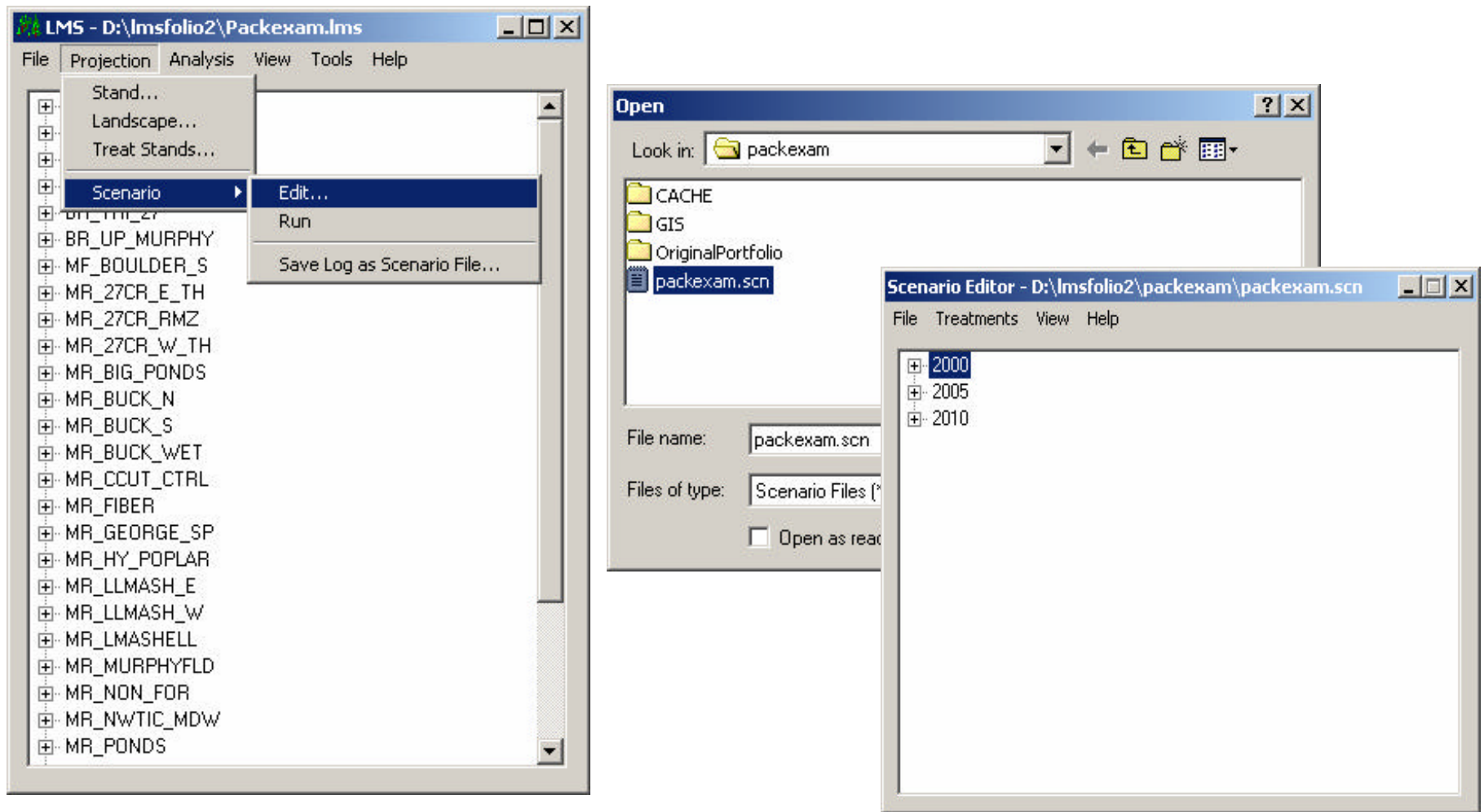


Figure 11.1 Scenario files provide an easy way to set chronological treatment simulations for all or some of the stands in a landscape. The basic format of the file is a list of treatments in specific growth intervals for stands. Treatments are written in a text format and stored in \*.scn files. LMS downloads with a canned **packexam.scn** file. To view and edit \*.scn files, in the LMS main window, click **Projection/Scenario/Edit**. Open the **packexam.scn** file. The **Scenario Editor** will appear.

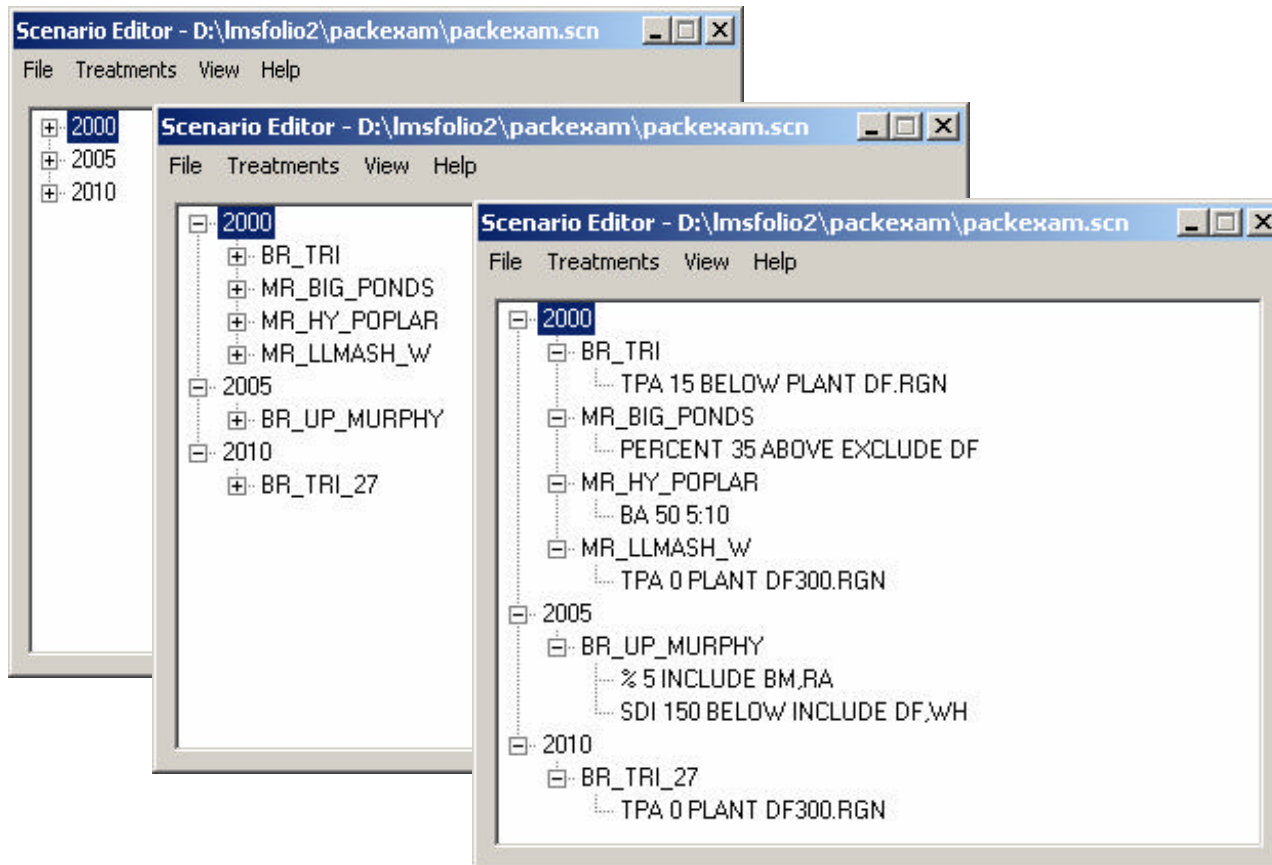
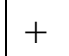


Figure 11.2 A list of treatment years will appear. Click the  beside the year and the record of stands to be treated for that year will appear. Click individual stands and the treatment code will appear.

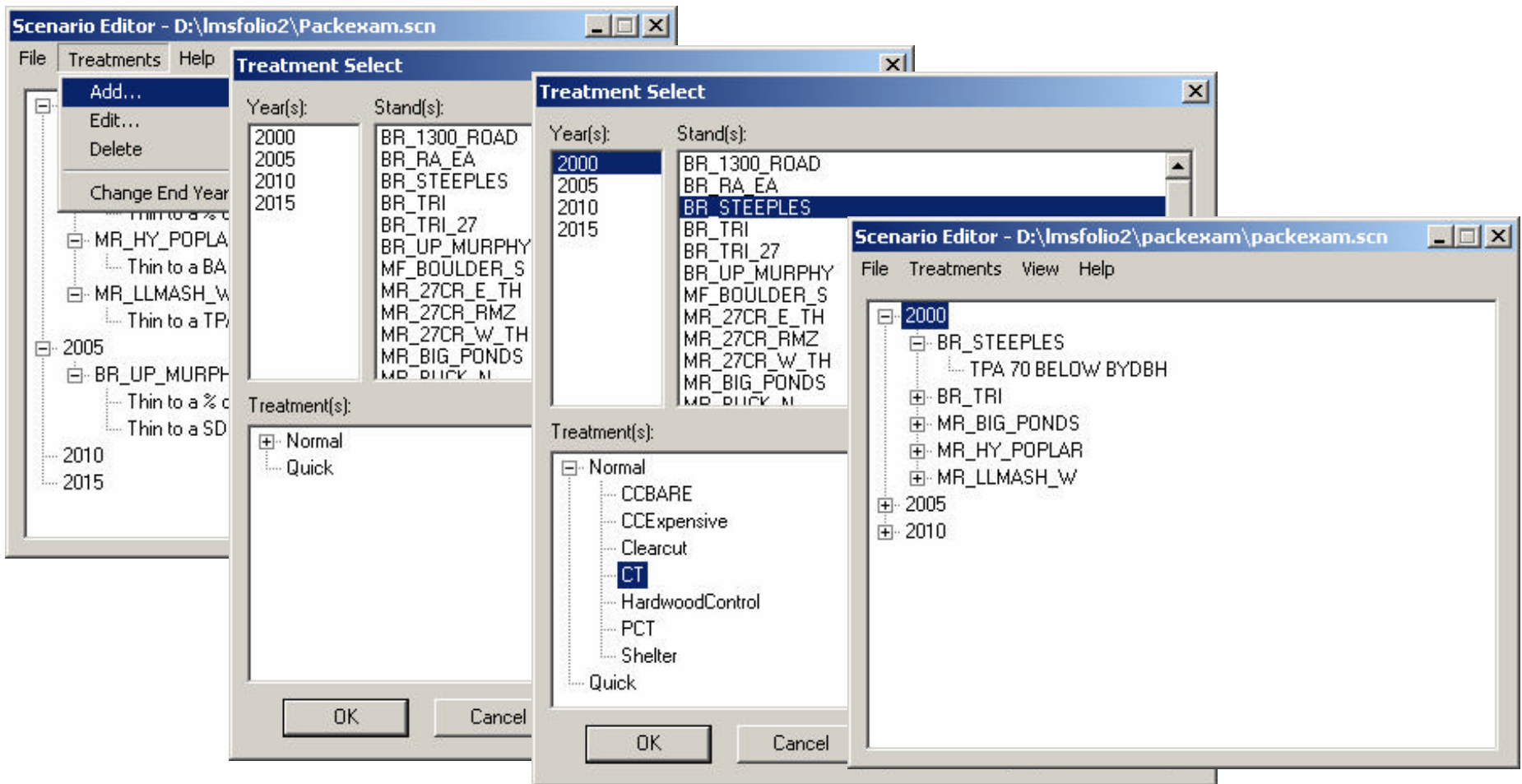


Figure 11.3. Click **Treatments/Add...** in the Scenario Editor. The **Treatment Select** window opens. Select a **year, a stand, and a treatment**. In this case, 2000 has been selected as a treatment year, BR\_STEEPLES as the stand to be treated, and CT (commercial thin) as the treatment. The **Quick** choice may be selected to create other than canned treatments. Click **OK** and the Scenario Editor window returns with the new stand treatment added. This process is repeated to add multiple stands and treatments to create a landscape management scenario file. CT is the code name for thinning to 70 TPA from below by DBH. Click **File/Save** to save changes.

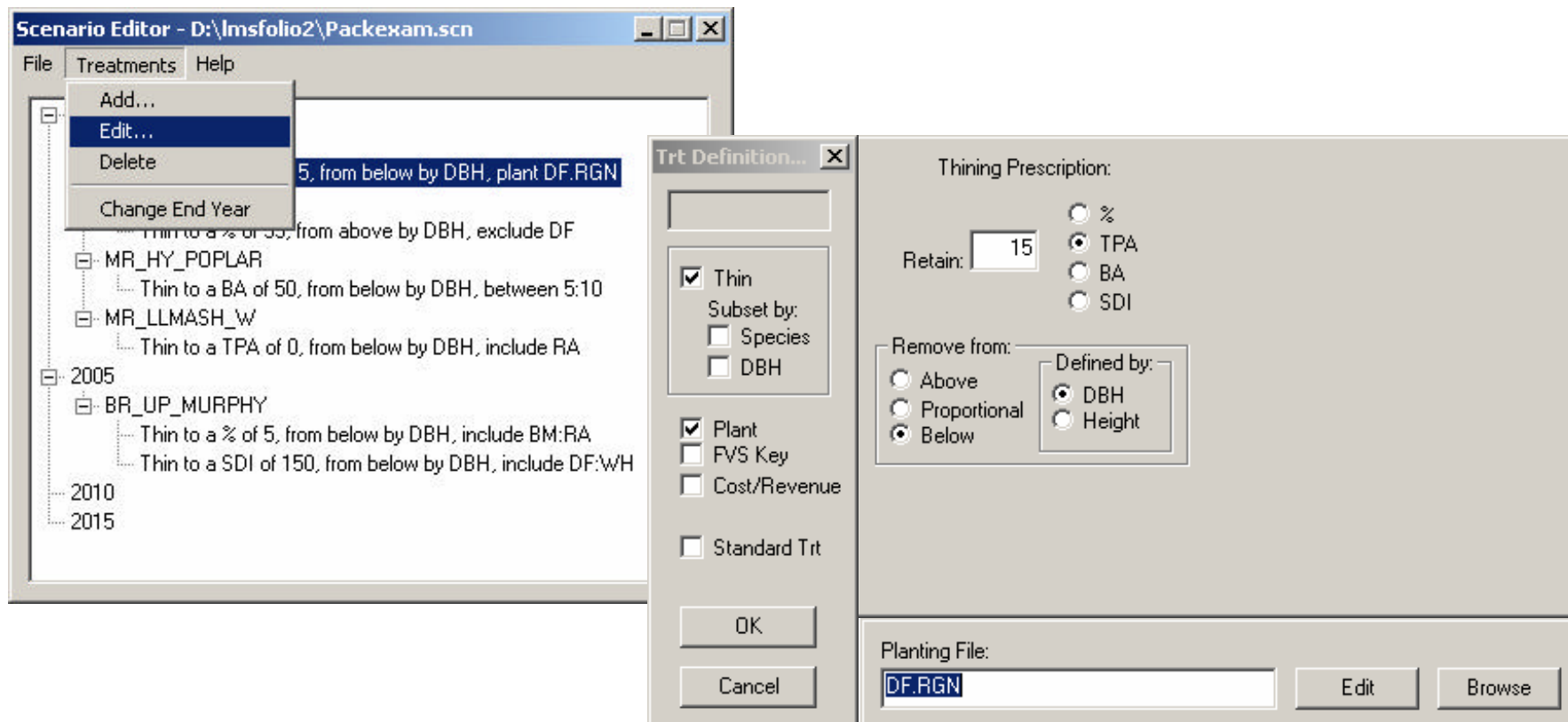


Figure 11.4. To edit treatments click on treatment, click **Treatments/Edit**, and the **Treatment Definition** window opens.

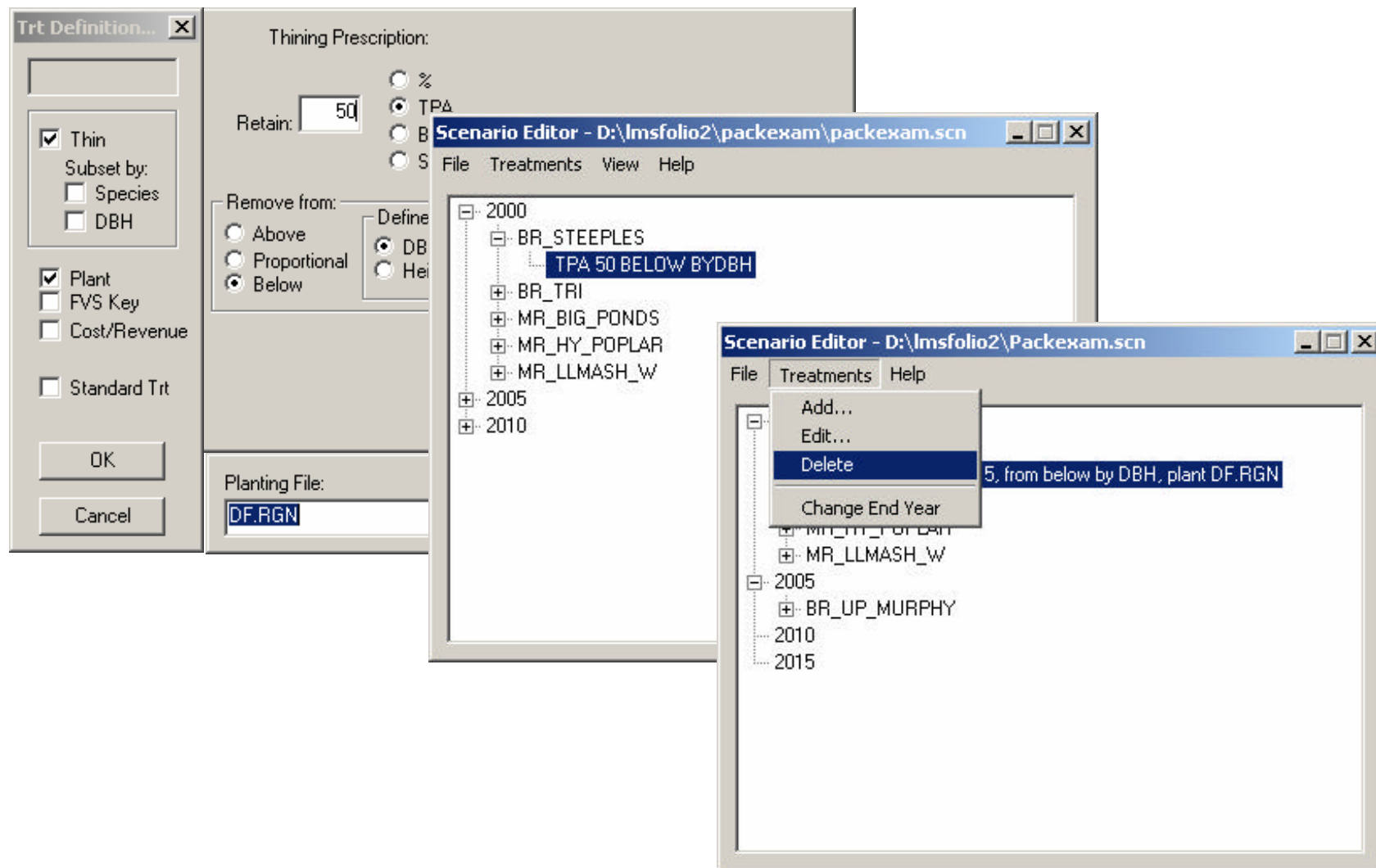


Figure 11.5. **Make treatment edits, click OK** (in this example the TPA was changed from 70 to 50). Treatment changes are displayed in the Scenario Editor. **Click File/Save** to save changes. To delete changes highlight treatment then click **Treatments/Delete...** Highlighted treatment is removed.

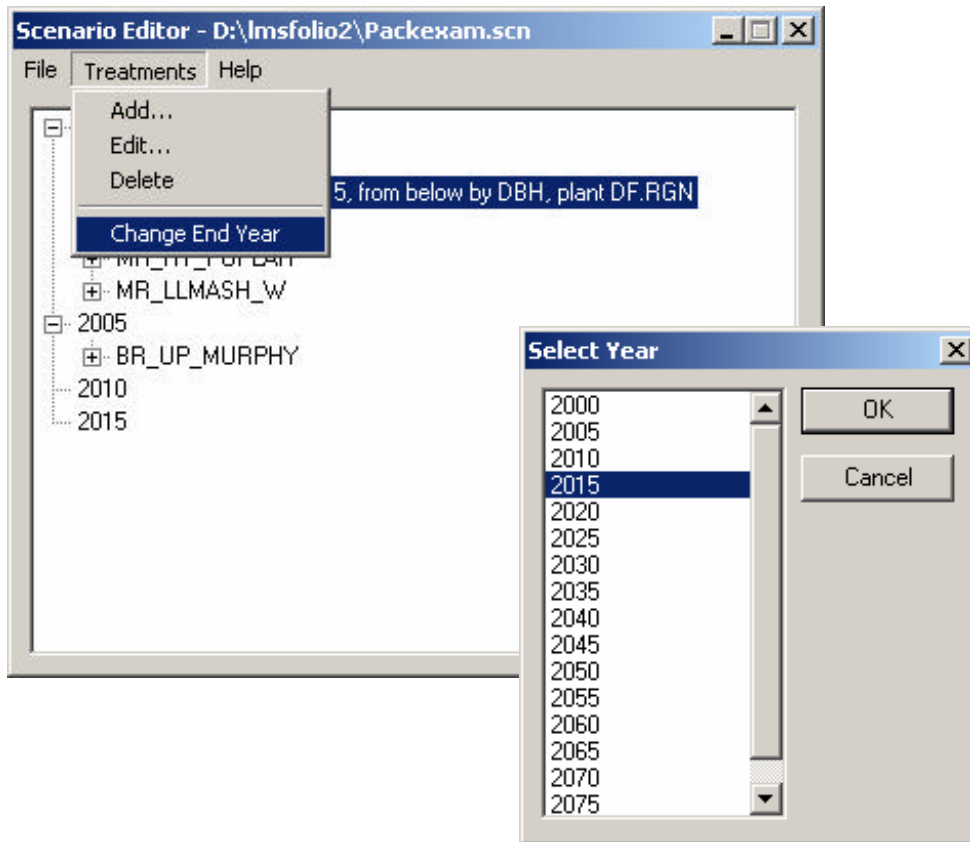


Figure 11.6. To adjust the end year of the landscape scenario file, click **Treatments/Change End Year**. The **Select Year** window will open. Once end year is changed click OK and remember to save the file.

# *Species Abbreviations*

Different variants of FVS recognize discrete groups of species by specific letter or numeric codes. It is important that inventory files conform to these codes. Tree records that do not conform will be regarded as OT (other) species. This is important information for proper inventory data entry and species specific treatments.



**Acrobat Document**

Click the icon to load  
the SpeciesCodes.pdf  
file



# EXERCISE

- **Create your own “new” scenario file and “run” the scenario forward to 2050.**
- **Open the tables, Consequences and Volume by Size. Copy the data into the previously created template (\*.xlt) files. Make comparisons with a “no action” management alternative.**
- **Make a series of “envision” landscape pictures and save into Power point to display landscape changes over time.**