

**Subset, copy, & edit portfolios**

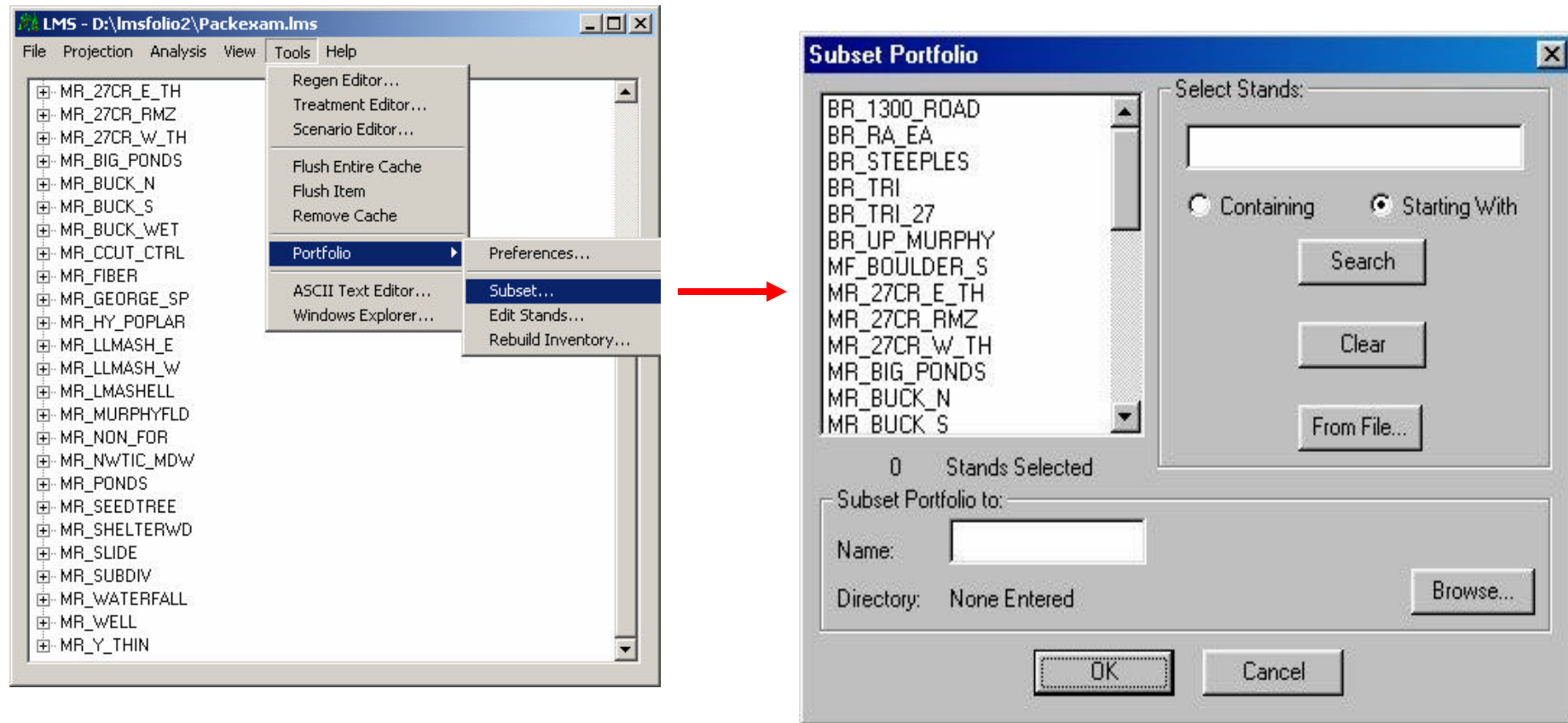


Figure 13.1 It is useful to create another portfolio which contains one or more stands or interest. These portfolios are Subsets of existing portfolios and are frequently used to experiment with alternative treatments to examine comparative outcomes. To create a subset portfolio click **Tools, Portfolio**, and then **Subset**. The **Subset Portfolio** dialog will open.

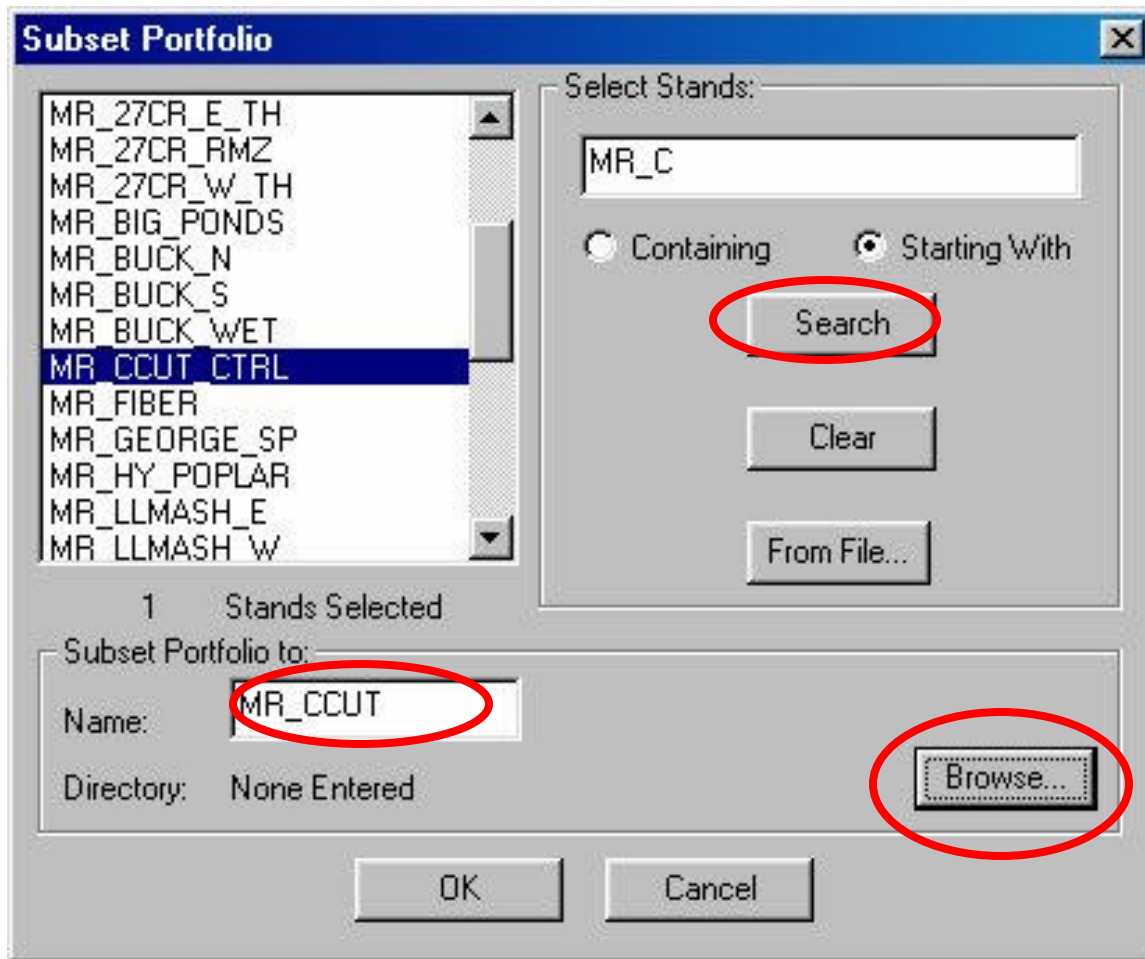


Figure 13.2 The **Subset Portfolio dialog** allows selection of stands by clicking the name of a stand or by using a search string in the select stands section of the dialog. Use MR\_C, **Starting With**, **Search** to highlight the MR\_CCUT\_CTRL stand. Note: the **Search** function is case sensitive. Once one or more stands are selected enter a name for the new Subset Portfolio (in this case MR\_CCUT), click the **Browse** button to **select a directory** for the new subset portfolio.

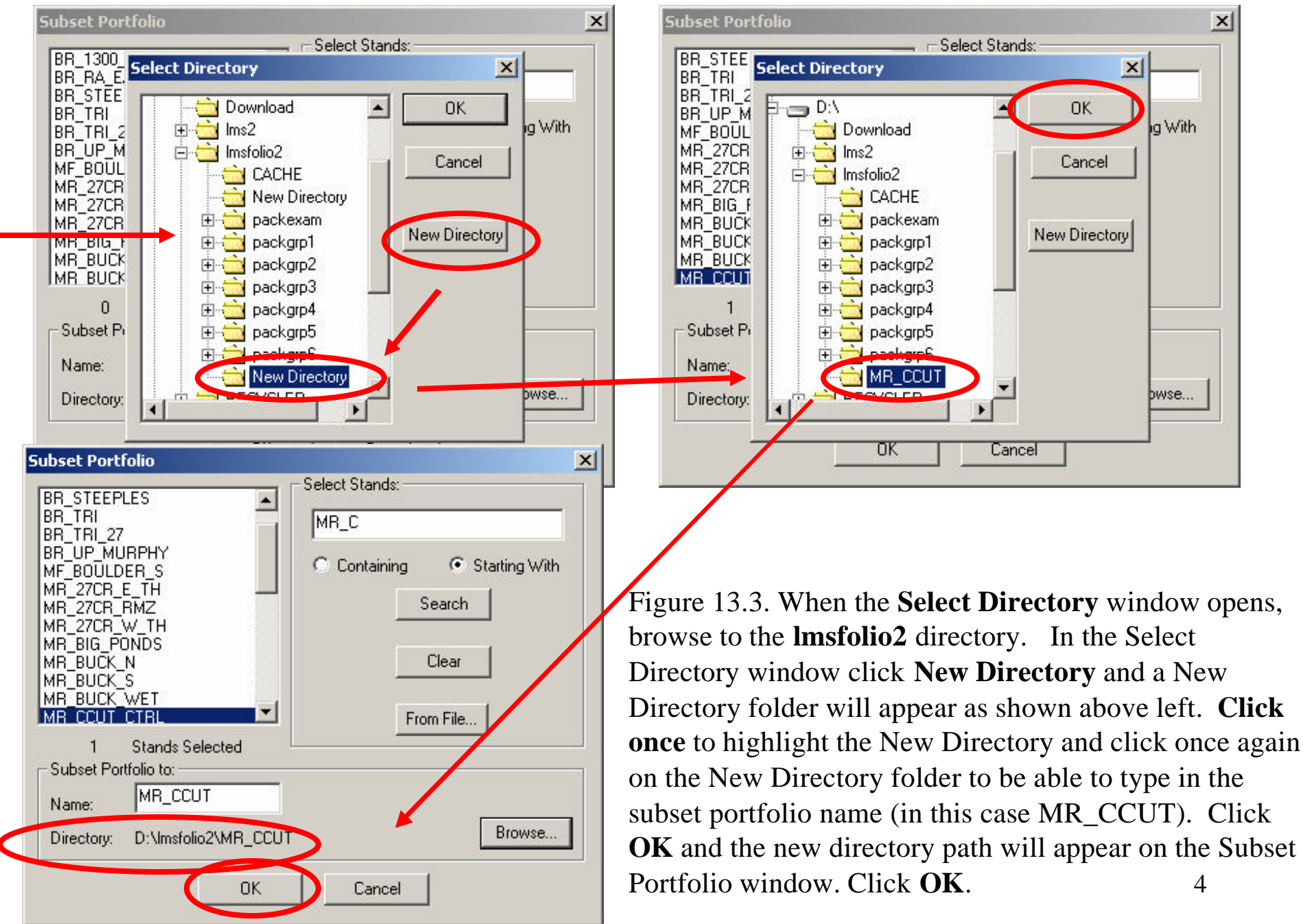


Figure 13.3. When the **Select Directory** window opens, browse to the **msfolio2** directory. In the Select Directory window click **New Directory** and a New Directory folder will appear as shown above left. **Click once** to highlight the New Directory and click once again on the New Directory folder to be able to type in the subset portfolio name (in this case MR\_CCUT). Click **OK** and the new directory path will appear on the Subset Portfolio window. Click **OK**.

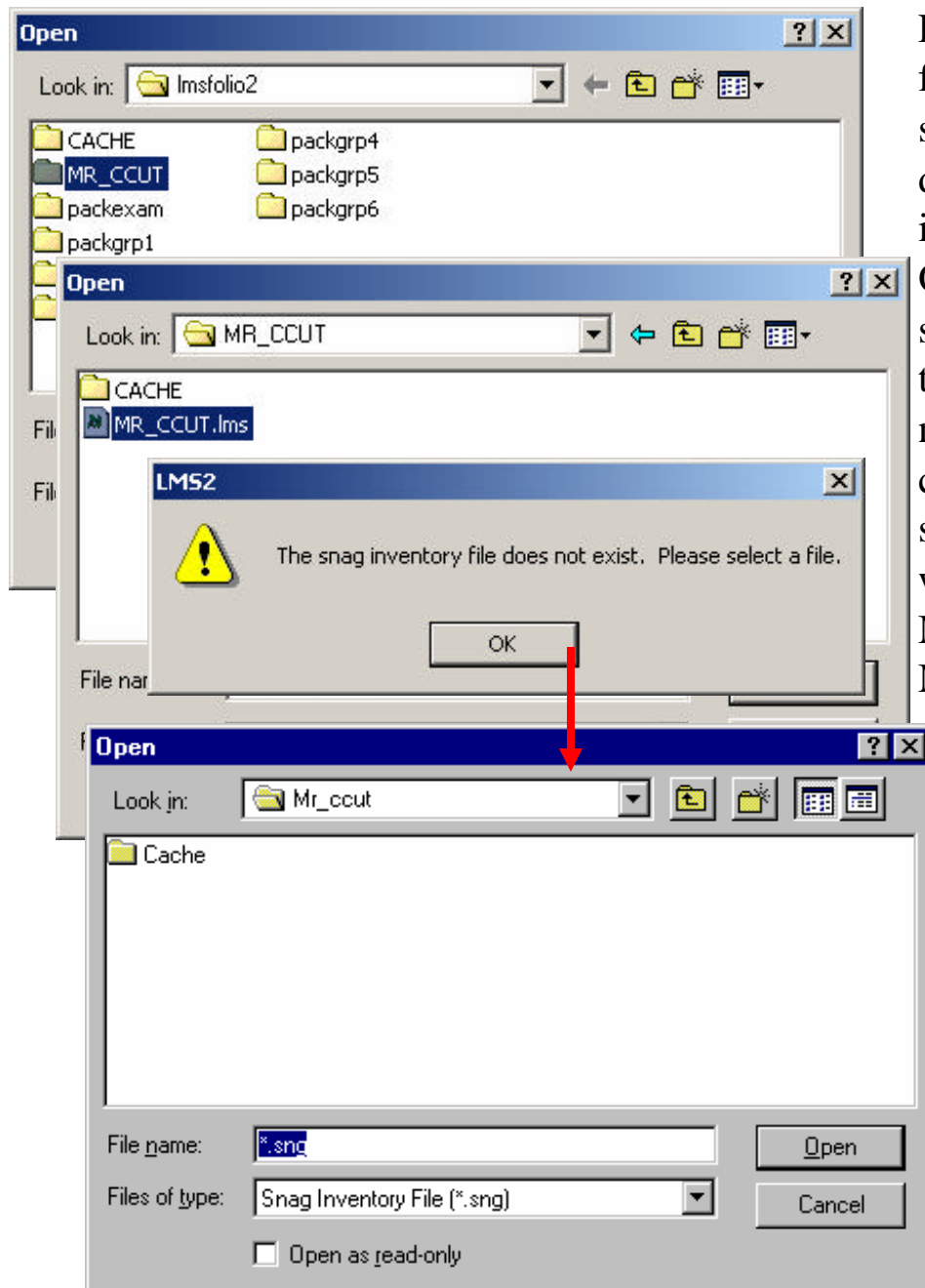
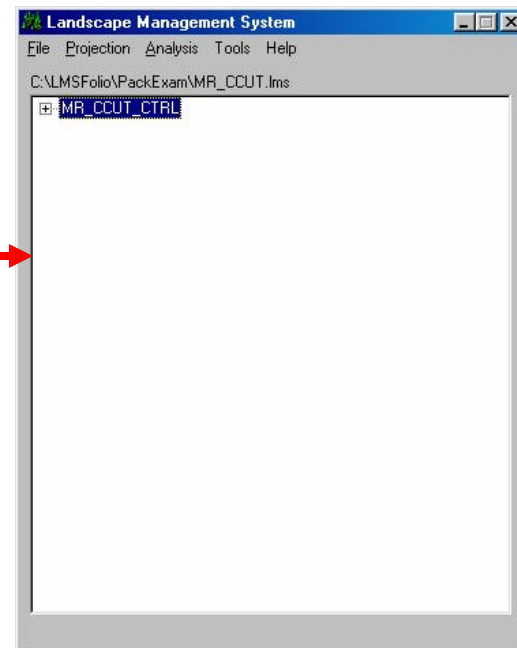


Figure 13.4 Close the open portfolio (packexam) from which the subset was selected. Open the new subset portfolio, MR\_CCUT, in the lmsfolio2 directory. A warning will appear about the snag inventory file. **Click OK**, and then **cancel** in the Open dialog. This appears because MR\_CCUT is a subset rather than full portfolio. The second time that the subset portfolio is opened this warning will not appear. Subset portfolios have all LMS capabilities except Landscape Visualization (if stand names are changed Landscape Visualization will not work properly). The new portfolio MR\_CCUT opens with one stand, MR\_CCUT\_CTRL.



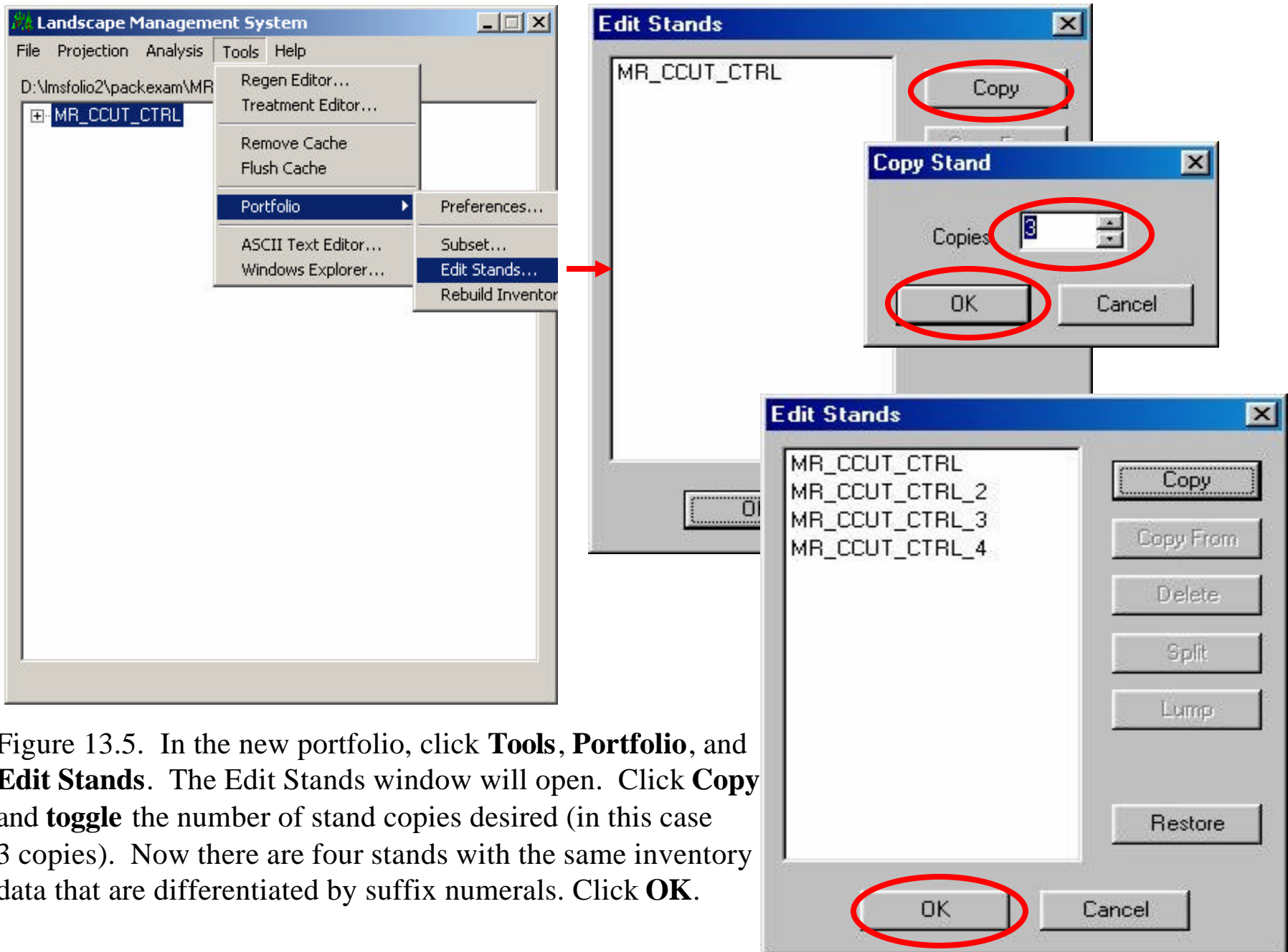


Figure 13.5. In the new portfolio, click **Tools**, **Portfolio**, and **Edit Stands**. The Edit Stands window will open. Click **Copy** and **toggle** the number of stand copies desired (in this case 3 copies). Now there are four stands with the same inventory data that are differentiated by suffix numerals. Click **OK**.



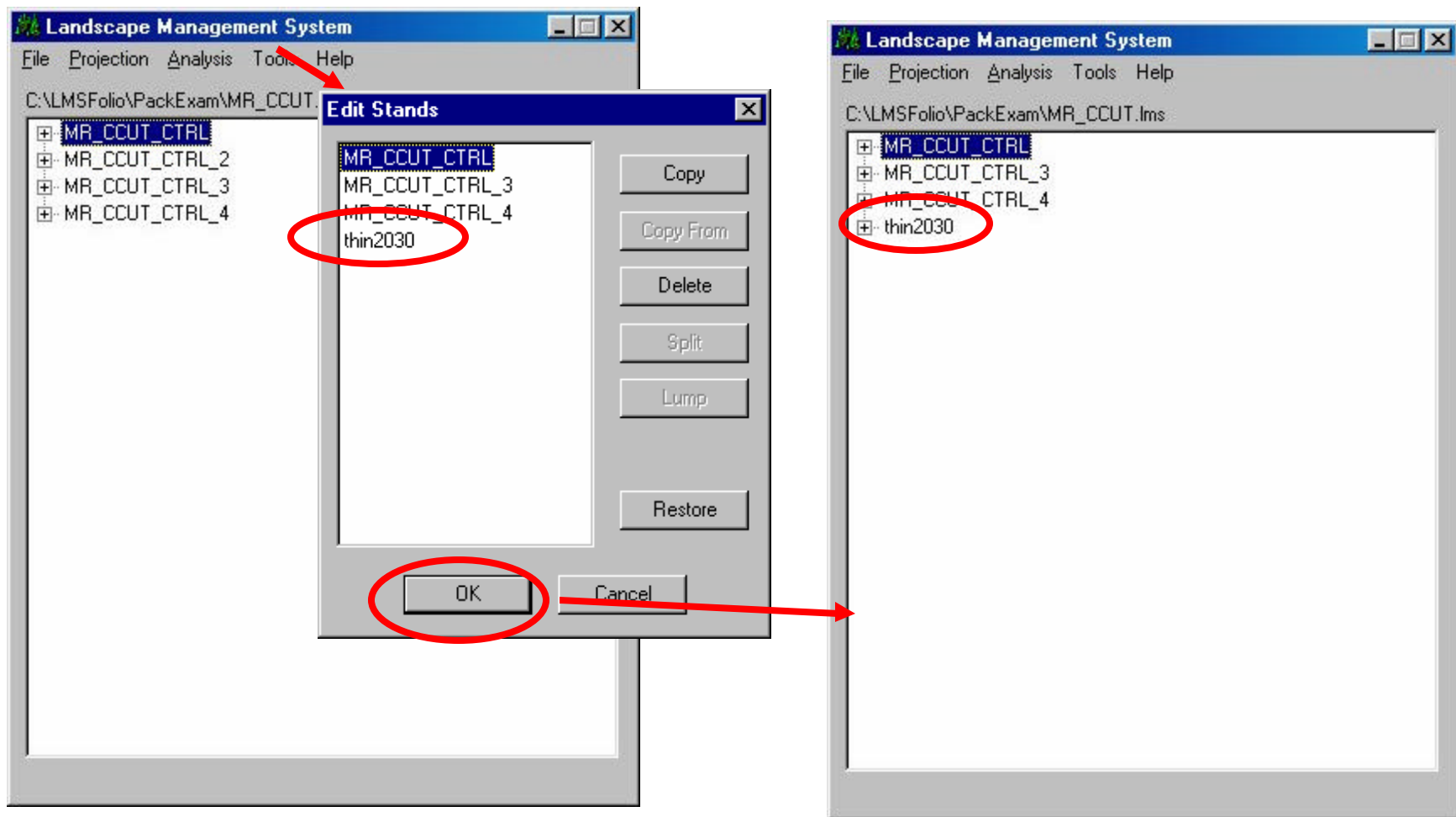
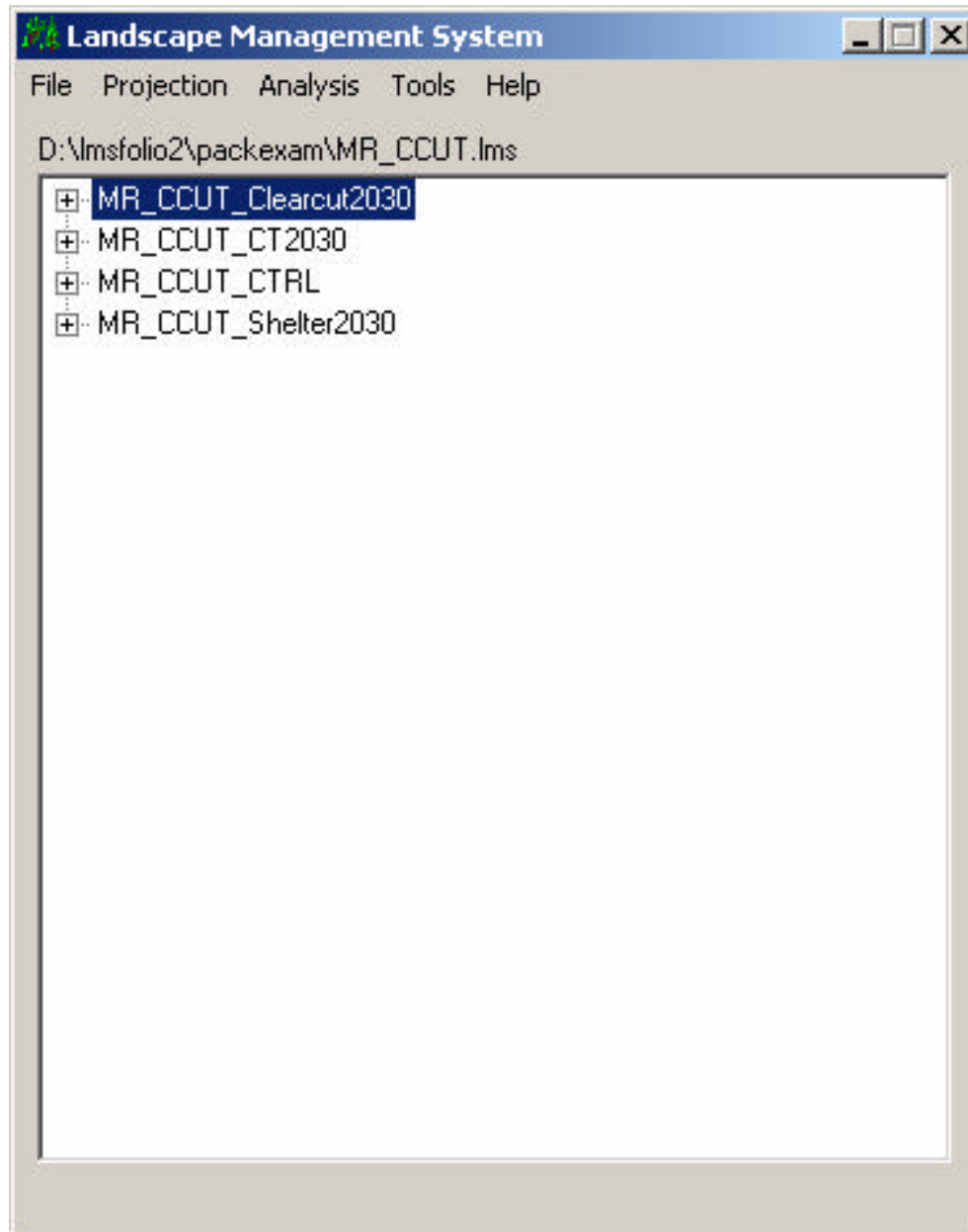


Figure 13.6. The Main Window records the portfolio changes. Click **Tools**, **Portfolio**, and **Edit Stands** to return to the **Edit Stands** window. **Double click a stand to rename** (click once to select the stand and a second time to enable the edit function) it to reflect treatment alternatives. The example here shows that MR\_CCUT\_CRTL\_2 has been renamed THIN2030. Click **OK** and the Main Window returns with the stand name changed. If the user clicks **Restore** in the Edit Stands window, the Portfolio returns to the number of stands present at portfolio opening (in this example, the portfolio would contain one stand if restored).



**Exercise 1. Create this portfolio and treat these stands by different pathways & compare results through 2050**

**Exercise 2. Create a duplicate portfolio like the original “Packexam.lms”**